



www.elfedhs.co.uk

Excellent achievements at Elfed High School

'Our students' brilliant achievements confirm that we are an *'Outstanding Learning Community'*.
- Rosemary Jones, Headteacher



achieved 5 or more GCSE grades A* to C including English and Mathematics
(Flintshire average 61%*)



achieved A* to C in English GCSE
(Flintshire average 73%*)



achieved A* to C in Mathematics
(Flintshire average 68%*)



achieved 5 or more A* to C grades
(Flintshire average 81%*)



achieved 5 GCSE qualifications
(Flintshire average 94%*)

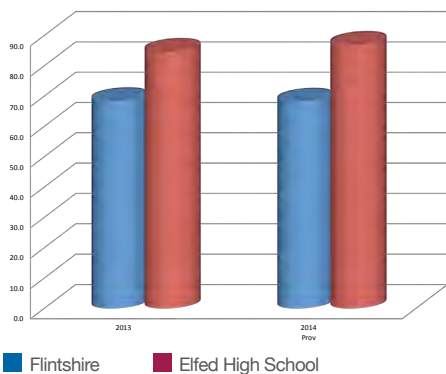
*provisional



I can never thank this school enough for the fantastic opportunities that it has given me. - Former Student

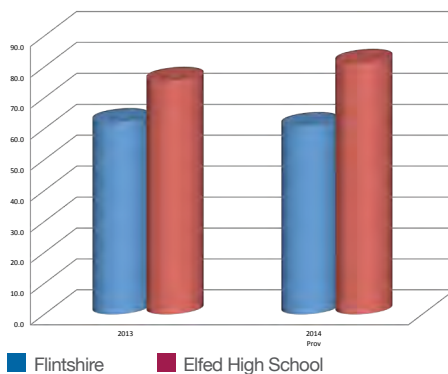
Congratulations Llongyfarchiadau

% of Year 11 students achieving A*-C in GCSE Mathematics



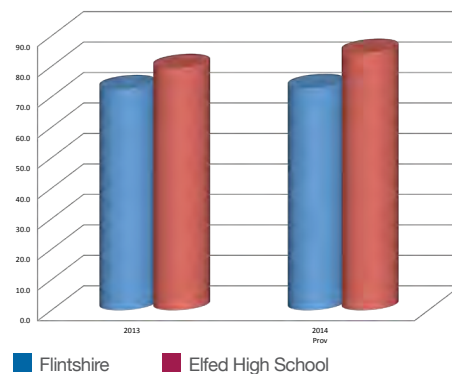
*provisional data August 2014

% of Year 11 students achieving 5 or more A*-C in GCSE grades including English and Mathematics



*provisional data August 2014

% of students achieving A*-C grades in English GCSE



*provisional data August 2014

Sustaining Excellence at Elfed High School

Elfed High School is celebrating a very successful school year with some impressive academic achievements.

Year 11 and Year 13 students, supported by their families and our exceptional teachers, have, once again, achieved at the highest level in 2014.

Elfed High School's Year 11 students have sustained the excellent standards of previous years. They have even exceeded the School's previous best performance.

The percentage of students achieving 5 or more A* to C grades has risen from 85% to 89%, compared to the Flintshire average of 80%*. An outstanding 81% of students achieved at least 5 A* to C GCSE grades including English and Mathematics, compared to the Flintshire Average of 61%. This compares with the very best in Wales.

The dedication of our A Level students has again been rewarded with some brilliant results. For the fourth successive year the Level 3 threshold pass rate was a perfect 100%.

We wish the students every success as they progress to prestigious universities, colleges, training and employment.



We are very proud of these superb achievements and the excellent progress that every individual student has made during their stay at Elfed.

We provide a happy and supportive learning environment for our students and we take great pride in their superb results. Thank you to the families and school staff for all the support and encouragement that has helped the students to achieve standards of personal excellence.

Mr A Stubbs, Learning Director.



What is Elfed Extra?

Elfed Extra is a programme of activities outside the school curriculum involving students, families and the wider community.

Elfed Extra motivates students by making learning fun, interesting and exciting. Activities take place before school, during lunchtime and after school. The programme is on the website.



The school day begins with **Breakfast Club and Study Club.**



At lunchtime you can choose from sports such as **dodgeball, basketball and handball**, or develop your skills in **Elfed Youth Theatre, Choir, Band and many more.**



After school there are the **team sports, such as football, rugby and netball**, along with our **popular study club in the school library.**



The Elfed Extra 'Smooth Moves' to Elfed programme is designed to support pupils and their families in primary schools as they prepare for the move to Elfed High School.



Elfed Extra Families programme offers opportunities for parent and carers to engage with their child's learning. It provides a framework for community involvement and support for the school.



You can find out more about learning out of school hours at Elfed High School on our website www.elfedhs.co.uk

Working in Partnership

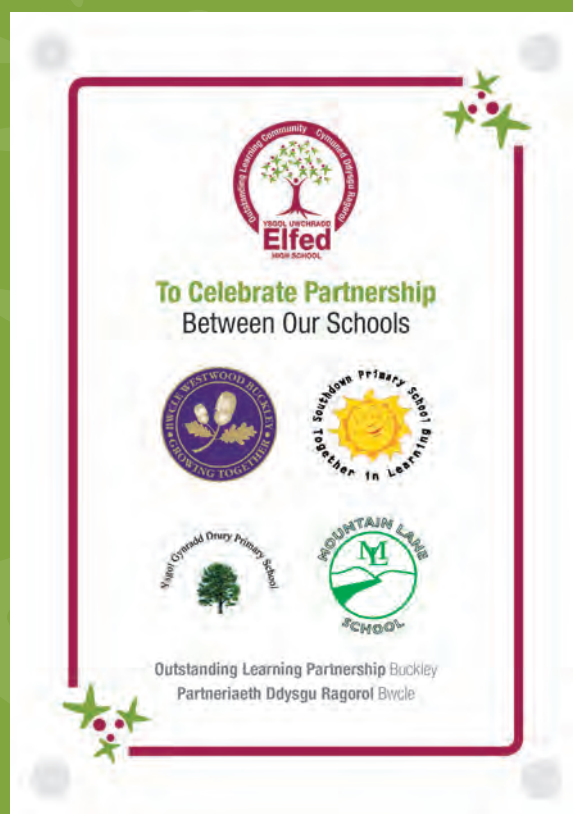


We are working together with our partner primary schools to provide excellent learning opportunities at Elfed High School.

Thank you to the staff of Drury, Mountain Lane, Southdown and Westwood Primary Schools for your support.

Lady Jones presented plaques to primary schools to celebrate our partnership.

Lady Jones presented plaques to primary schools to celebrate our partnership.



'Top for Attainment' Daily Post Real Schools Guide

The Daily Post has identified Elfed High School as the top school for Attainment in North Wales, second for teaching and 9th overall among all the secondary schools in Wales.



ELFED HIGH SCHOOL	
Name	FLINTSHIRE
Local Authority	
Rating	★★★★★
Overall	74.17/100
Rank	9/3,079
(Secondary Schools in Wales)	

Thursday 2nd October 2014

Open Day

Tours of the school throughout the day.
Call 01244 550217 to book your tour.

Open Evening

Open school event 5.00pm to 7.30pm
Headteacher's presentation at 6.00pm
All welcome